



Salford Royal **NHS**
NHS Foundation Trust

University Teaching Trust

safe • clean • personal

The Role of the Colorectal/Pouch Nurse prior to surgery

Aims and Objectives

- The role of the colorectal/pouch nurse
- The MDT process
- Pre operatively counselling

Current pouch service

- History of SRFT Pouch service
- 7 Colorectal surgeons
- Mr Soop Lead Pouch surgeon
- 7 Colorectal nurses, 5 Stoma nurses and 1 Support worker
- 8-12 pouches a year

A Specialist Nurse Role :-

- Clinician
- Educator
- Researcher
- Consultant/resource
- Administrator/manager/change agent

Direct Care

- Expert practitioner
- Role model
- Patient advocate

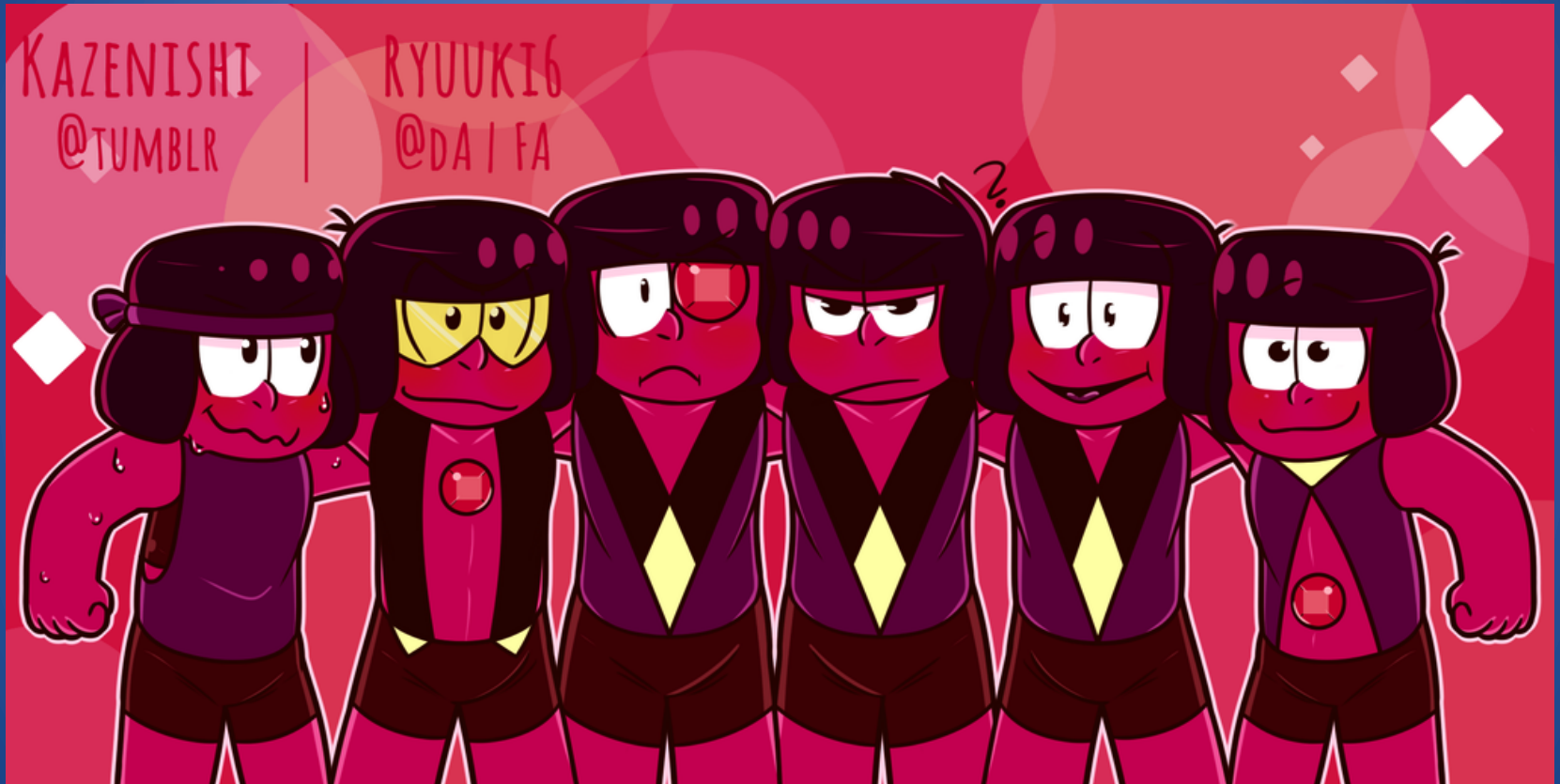
Indirect Care

- Clinical teacher/supervisor
- Communicator
- Researcher
- Liaison
- Enabler

Is Pouch surgery for me?

- unresponsive to medical therapy,
- Familial adenomatous polyposis (FAP)
- Function is effecting QOL
- You have just had enough of your symptoms

Multidisciplinary Team Meeting

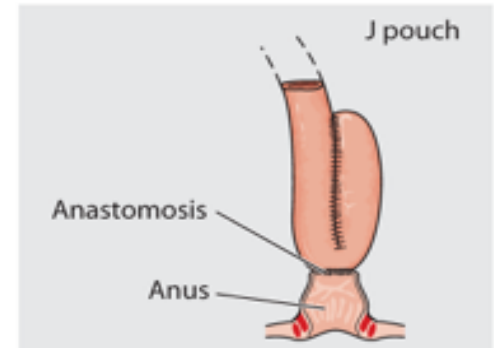
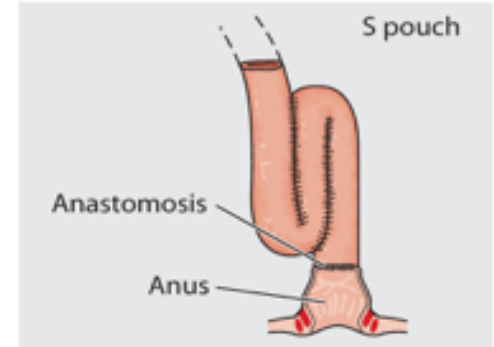
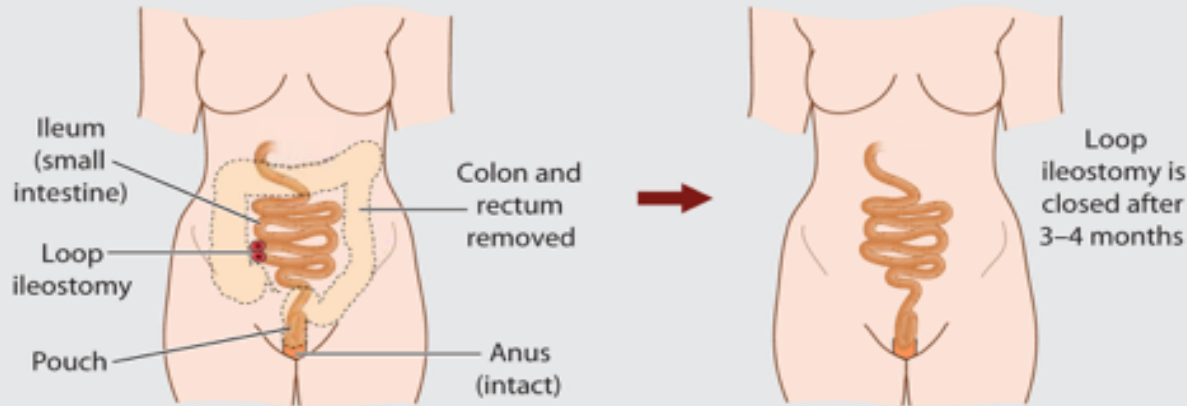


Successful outcomes

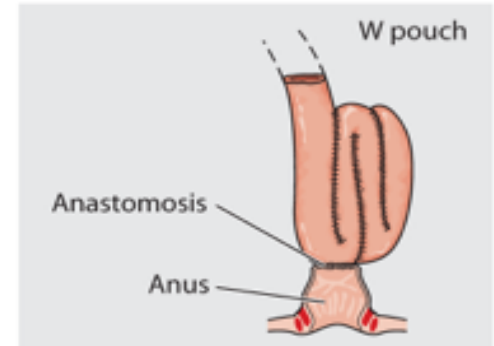
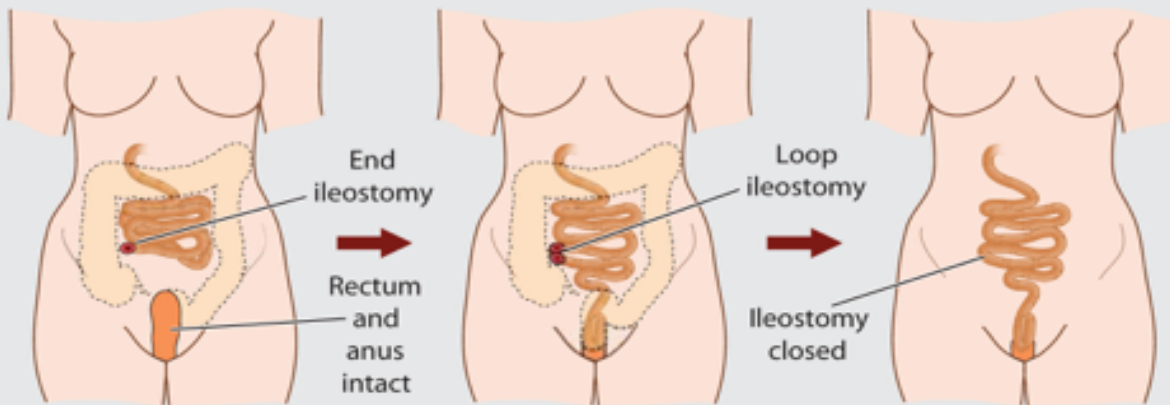
- Sensible patient selection
- Contraindicated: crohns disease, weak anal sphincters, obesity
- Clear pre operative counselling
- Realistic expectations

Staged Operation

2-stage proctocolectomy



3-stage proctocolectomy



Role of the nurse specialist

- Role of the nurse practitioner/specialist
- Early introduction to patient and reassurance of long-term point of contact
- Realistic expectations of pouch function and lifestyle (written information)
- Comprehensive understanding of the process and stoma care-differentiate
 - between end and loop stoma
- Introduce an established patient with similar background
- Assess psychological, physical, spiritual, religious, cultural and socioeconomic
 - needs
- Patients informed as to what will happen post-operatively/stoma care

In Summary

- The colorectal specialist nurse primary aim is
- To co-ordinate & deliver care to the colorectal pouch patient from the point of referral, always there to provide advice